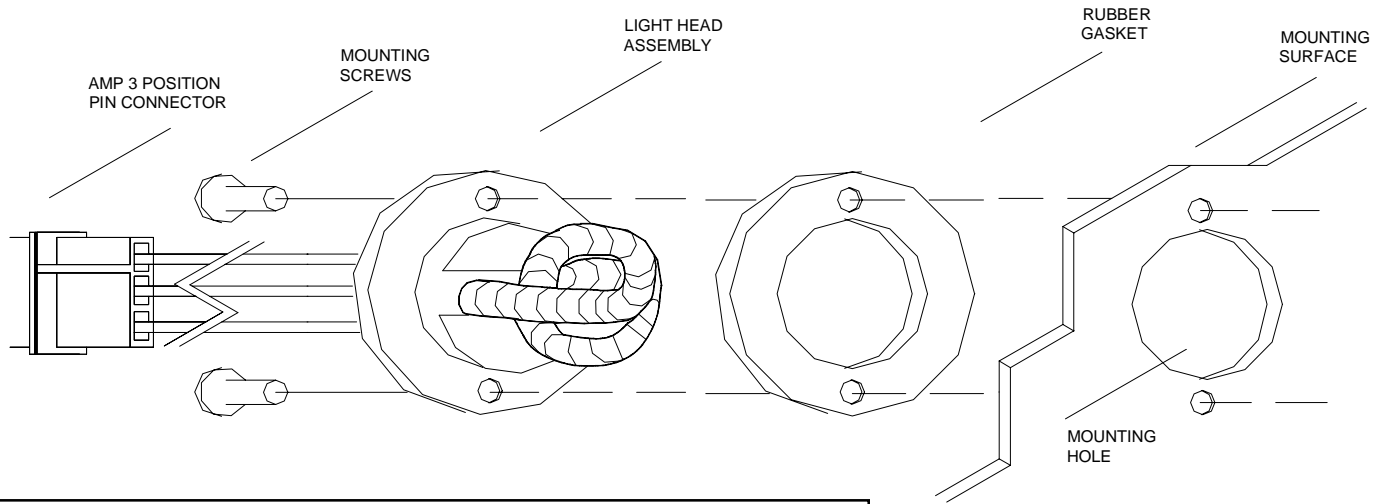


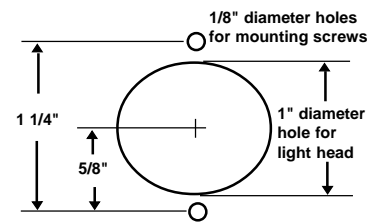
SHO-ME® Instructions

21.7121 Hide-A-Flash Tube



WARNING

**High voltage on the surface of the glass tube.
The Model 21.7121 strobe light head
is an open flash tube with no protective lens.
Proper installation is required.
Do not touch strobe tube or the strobe tube assembly
when in operation.**



MOUNTING HOLE DIMENSIONS

'COMPOSITE' AUTOMOTIVE HEADLIGHT, CORNER LIGHT, OR TAIL LIGHT INSTALLATION USING A MODEL 21.7121 STROBE LIGHT HEAD

1. Since the strobe tube will share the same reflector as the headlight, brake light, or corner light, make sure the strobe tube does not interfere with the proper operation of the currently existing lights.
2. After taking the Composite reflector assembly from the vehicle, select a surface which is as flat as possible in the rear or bottom of the Composite housing. Cut a 1-inch clearance hole for the strobe tube into the housing. Use the strobe light head gasket as a template to mark the location of the two mounting screws.
3. After selecting the best location for the strobe power supply (refer to your power supply instructions) string the three-conductor cable from the power supply location to the remote strobe light head. NOTE: The end of the three-conductor cable with the closed tip terminals (male pins) connects to the strobe power supply; the open-ended terminals (female sockets) connect to the strobe light head assembly.
4. Install the three-socket AMP housing onto the end of the three-conductor power cable to be connected to the MODEL 21.7121 remote strobe light head assembly (see figure A). Connect the cable and light first.
5. Install the three-socket AMP housing onto the end of the three-conductor power cable to be connected to the strobe power supply (see figure A). Connect this cable to one of the strobe light outlets located on the strobe power supply. Repeat the installation instructions for the other remaining strobe light heads then connect the strobe power supply to the power source as indicated in the instructions enclosed with your power supply. Test the system.

NOTE: This testing may be performed before securing the remote strobe light head assembly to the mounting surface of the Composite housing assembly as described in Section 2.

IMPORTANT WARNING...When connecting the AMP connector housings to the AMP pins and sockets, observe THE COLOR OF THE WIRES CONNECTING TO EACH PIN NUMBER POSITION as indicated in figure A (shown below).

IMPORTANT INFORMATION FOR INSTALLATIONS USING SHIELDED CABLE

On the end of the cable by the Model 21.7121 Strobe head, cut the shield flush with the cable jacket. On the other end of the cable, by the power supply, the shield wire should be grounded to the vehicle chassis to reduce radio or other communication system interference. ALWAYS KEEP THIS WIRE AS SHORT AS POSSIBLE WHEN GROUNDING. If this ground shield wire is not to be installed, cut it flush with cable jacket.

WARNING: The strobe power supply is a high voltage device, therefore do not remove strobe tubes or dismantle light heads while unit is operating. Always wait ten minutes after turning off the power before starting any troubleshooting work.

