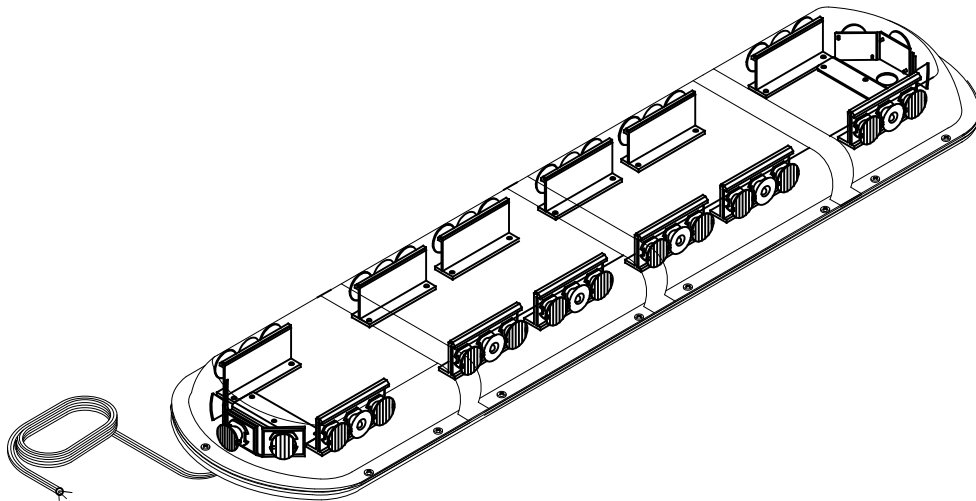




MODEL NO. 12.1237
Permanent Mount
Luminator LED Stretch Bar



GENERAL INFORMATION:

The **SHO-ME**® Luminator LED Stretch Bar is equipped with a Solid State Flasher. The flasher has 15 flash patterns including random. To change flash patterns momentarily apply +12v to the white, mode wire. Each time +12v is applied, the flash pattern will change.

FLASH PATTERNS

- | | | |
|-------------------------|-------------------------------|---------------------------|
| 1. Quad Alternating | 6. Left Steady/ Right Steady | 11. Double Flash All |
| 2. Single Flash 120 FPM | 7. Single Chase | 12. Quad Flash All |
| 3. Single Flash 240 FPM | 8. HyperFlash All | 13. SuperMEGA - steady |
| 4. Double Chase | 9. Steady Fade | 14. Random Non Sequential |
| 5. Back & Forth | 10. Single Alternating 90 FPM | 15. Random All |

INSTALLATION INSTRUCTIONS:

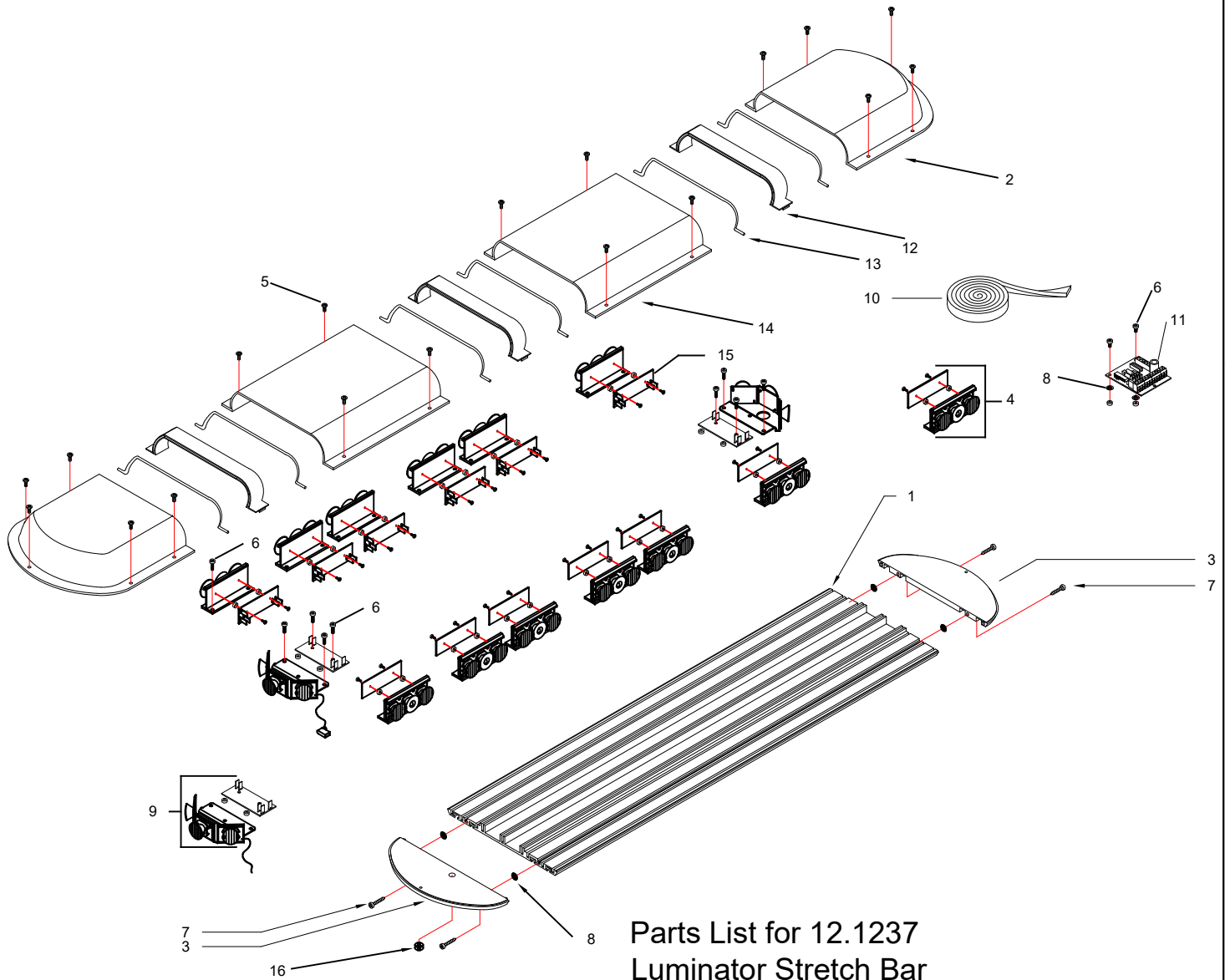
Determine location to mount your Luminator LED Stretch Bar. Attach bolts to bottom of your **SHO-ME**® Luminator LED Stretch Bar. Keep in mind airbag deployment area and any other obstacles. Run wire inside of vehicle and connect to switch. A momentary switch is required to change flash patterns.

If mounting this product requires drilling holes, the installer **MUST** be sure that no vehicle components or other vital parts could be damaged by the drilling process. Check both sides of the mounting surface before drilling begins. Also de-burr any holes and remove any metal shards or remnants. Install grommets into all wire passage holes.

Use only soap and water to clean the outer lens. Use of other chemicals could result in premature lens cracking and discoloration. Lenses in this condition have significantly reduced effectiveness. Inspect and operate this product regularly to confirm its proper operation and mounting condition. **Do not use a pressure washer to clean this product.**



PRODUCTS COMPANY 804 East Hwy 248 Cassville, MO 65625
U.S. and Canada Toll Free Numbers Phone: 800-641-4098 FAX: 800-526-1240
E-mail: sales@able2products.com WEB: www.able2products.com



**Parts List for 12.1237
Luminator Stretch Bar
Permanent Mount**

ITEM	MODEL NO.	DESCRIPTION	QTY
1	90.4986.000	31" Long Extrusion	1
2	90.6137.C00	Clear Lexan End Cover	2
3	90.6125.000	Black Plastic Endcaps	2
4	12.9530.000	Luminator (Amber, Blue,Red,White,Green)	12
5	90.4002.000	#8 X 1/2 812 Self Tapping Screw	8
6	90.4720.000	10mm Screw	32
7	90.4021.SS	Endcap Self Tapping Screws	4
8	90.4530.000	#8 External Tooth Lock washer	6
9	12.9540.000	End section Luminator (Amber, Blue, Red, White,Green)	2
10	90.6039.000	1/8" X 3/4" Black Foam Adhesive 88"	1
11	95.3728.000	Luminator Flasher 6 outputs	1
12	90.6138.000	Lens Joiner	3
13	90.6747.000	Rubber Gasket	6
14	90.6136.000	Clear Lexan 10" Middle cover	2
15	95.5015.000	Driver	1
16	90.6432.000	All fit adjustable bushing	1